

Malö Yachts 36 Classic

Built by Malö Yachts AB, Kungsviken, Sweden, Launched in 1998
Lying Algarve, Portugal

Price £130,000 VAT PAID



'FLYING SHADOW'

The Malö 36 offers spacious family cruising in a comfortable and incredible safe and seaworthy yacht. The large, deep cockpit offers exceptional protection. Large cockpit lockers and stowage throughout the interior. This is the 'Classic' version with a counter stern, aft deck space and a vast lazarette locker. This Malo 36 is presented in excellent condition, having been in the same ownership for over 20 years and very lightly used. We have known this boat throughout this ownership. She is impeccably maintained, last ashore for antifoul and anodes in September 2022. Fully refurbished teak deck in July 2023. Available to view afloat by appointment. Located in Portugal so she is available with EU VAT paid. UK VAT status is also possible if she is re-located to the UK prior to purchase completion.

LOA	11.75 m
Beam	3.48 m
Draught	1.75 m
Displacement	7,700 kg



Hull, Deck and Cockpit

Hand laid 12 mm teak on deck, coach roof and cockpit – **Fully refurbished summer 2023**

Insulated hull laminated with hand lay up method and balsa core

Integral solid moulded rubbing strake

Classic transom with aft deck and lazarette locker

Stainless steel boarding ladder mounted on transom

Stainless steel davits – swivelling and removable

Teak 'gin and tonic' seats in pushpit

Fixed windscreen with central opening pane

Stainless steel handrails on windscreen

Bimini over cockpit with side panels

Deck awning (mast to backstay with side panels)

Targa arch with mainsheet system over cockpit

Cockpit lights in targa arch

Wheel steering, geared link and rod system and emergency tiller

Steering pedestal with compass and stainless steel grab bar

Rudder in solid fibre glass, new rudder bearing 2022

Sprayhood and cockpit cover. Spare sprayhood and cockpit canopy, both in Sunbrella Supreme (Navy outer, oyster inner)

Folding cockpit table in teak

Opening gates in guard rails, port and starboard

Grab rails on coach roof

Andersen self tailing genoa winches

Andersen main and halyard winches

20kg Bruce anchor, 67m chain

Electric anchor windlass

Deck/anchor wash pump and hose in anchor locker (sea water)

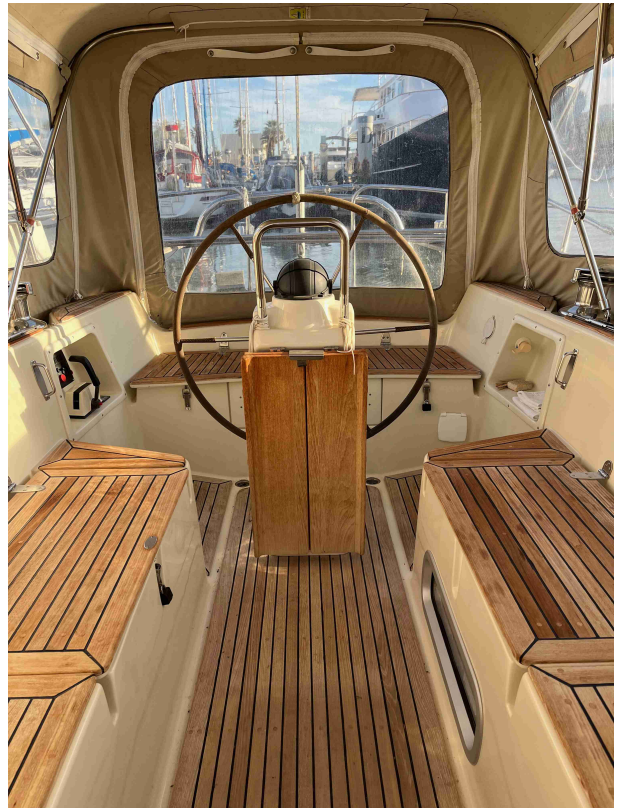
Large cockpit lockers to full hull depth

Aft cockpit locker combined with aft deck lazarette locker

Hot and cold cockpit shower

Gas locker

Warps and fenders



Rigging and Sails

Deck stepped Seldén mast with double swept back spreaders

Standing rigging original

Furling Genoa with Harken furling

Mainsail – fully battened with 3 reefs and Frederiksen low friction cars

Sails in good condition and unused after laundry and check over

Single line reefing system led to cockpit

Stackpack sail cover with lazyjacks (NEW and unused)

Selden Rod Kicker

Boom Brake gybe preventer

Folding mast steps to masthead

Track for spinnaker pole on mast

Spinnaker halyard

Cruising Chute with snuffer

Tricolour / anchor light at masthead

Flag halyards

Engine and Tankage

Yanmar 3JH2-TBE 47 hp 3 Cylinder Diesel 1120 hours

Full service August 2022

New turbo and exhaust elbow August 2022

Flexible shaft coupling, Aqua Drive

Shaft and cutlass bearing new August 2022

Fixed 3 blade propellor, serviced August 2022

Rope cutter to shaft, serviced August 2022

Glass bowl primary fuel filter/water separator

Second primary fuel filter with changeover valve

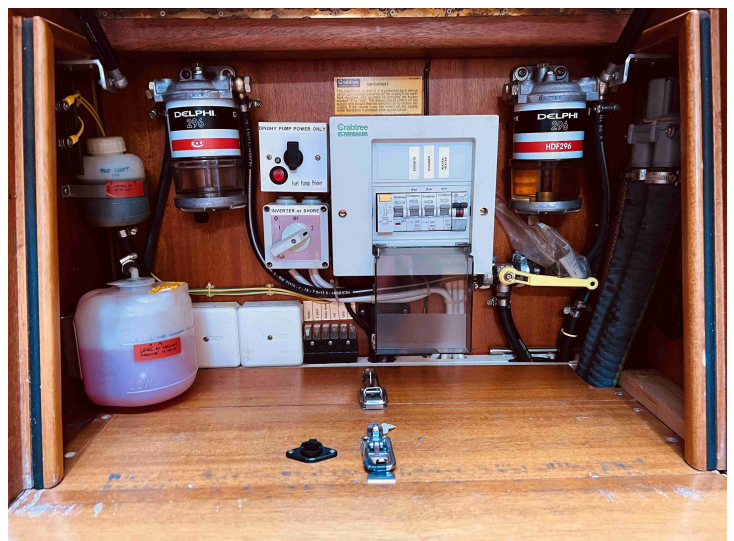
Side power bow thruster twin prop

Stainless steel water tanks (2) total 400l

Stainless steel fuel tank 235l

Stainless steel holding tank 40l

Water mater 12v, 7lph (in preserved state)



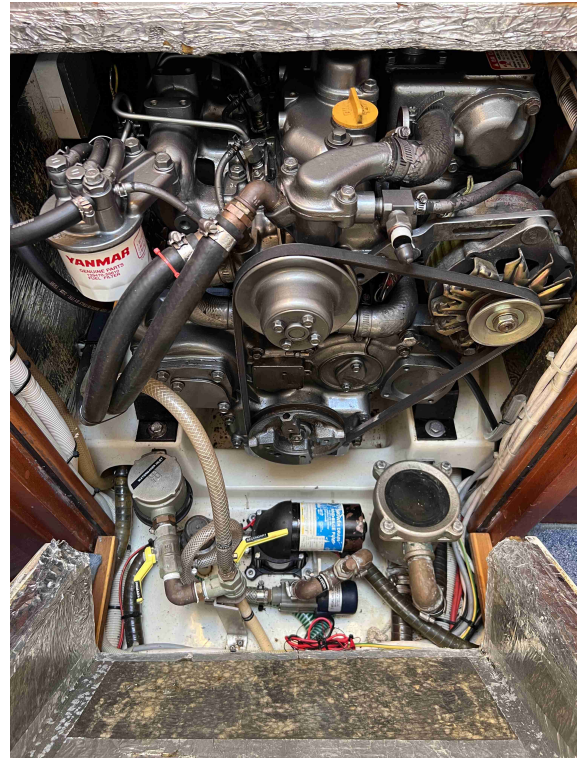


Electronics / Systems

Switch panel at chart table with circuit breakers, fuel and water gauges
Mastervolt Battery monitor
Simrad speed, depth and wind instruments over companion way
Shipmate RS800 at chart table, masthead antenna
Autopilot, Simrad
Raymarine Radar, 2 kw scanner on mast
Raymarine RL72 Radar/Plotter, dual station, cockpit and chart table
Simrad GPS RS5800
ICS Nav 6 Navtex
Shore power system - outlet sockets, 30A battery charger, water heater
Water heater/calorifier NEW 2018
Engine battery, Service batteries 2 x 120Ah (New 2019)
Adverc battery management system
Inverter Studer 1200W
Glomex TV antenna at masthead
Pioneer CD/Radio with Bluetooth
Avtex 12/240v TV and DVD player
12v outlets at chart table and cockpit (1 high current for dinghy inflator)

Safety Equipment

Fire blanket
Fire extinguisher x 3 (serviced October 2022)
Manual bilge pump
Electric bilge pump
Lifeline attachment points on deck and in cockpit
Jackstay lines
Radar Reflector



Interior

Pressurised hot and cold water system, carbon filter
Fitted carpets throughout
High quality fabric upholstery
Heater, Ardic Diesel fired to all cabins and heads
Cooling fans in cabins

Galley

Double stainless steel sink, carbon filtered supply
Cooker with oven and 2 burner stove, ENO (NEW and unused)
Microwave oven 240v in galley locker (use with shorepower or inverter)
Isotherm refrigerator
2nd Fridge/freezer in aft locker
Ample storage
Opening portlight

Saloon

Large dining area with sofa opposite.
Extending dining table
Extensive stowage below sofa, under seats and in lockers
Opening portlights
Deck hatch

Head

Spacious heads with shower, moulded sink and vanity unit
Hanging locker
Electric shower drain pump
Raritan Manual sea toilet
Opening portlight

Forward Cabin

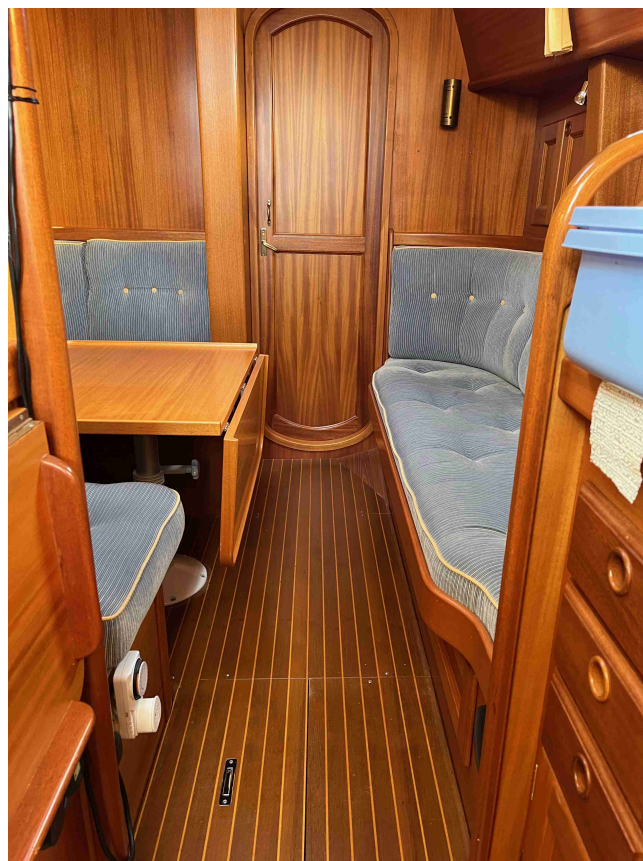
Large double berth with Ventair slats under mattress
Ample stowage in cupboards, lockers and under bed
Large hatch with blind
Opening portlights

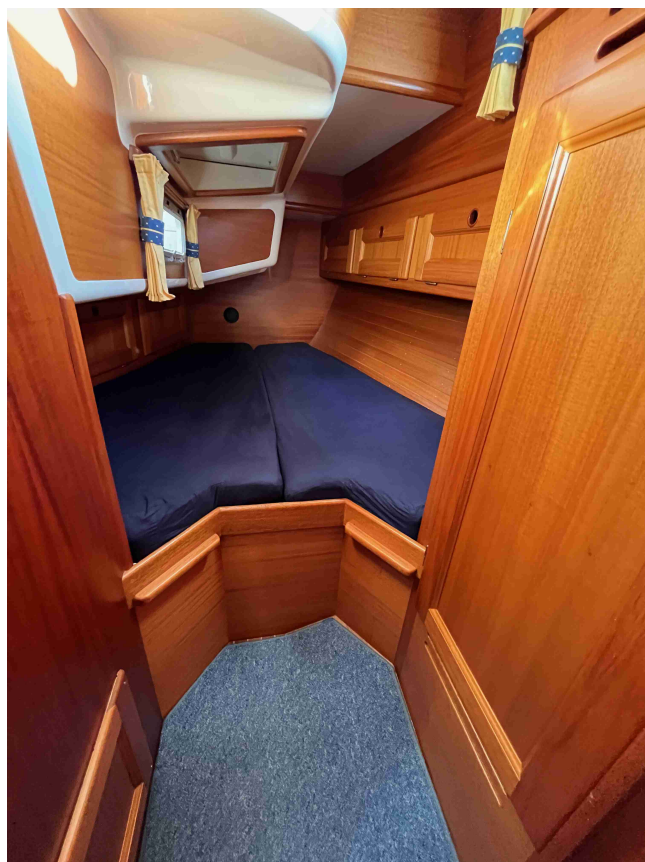
Aft Cabin

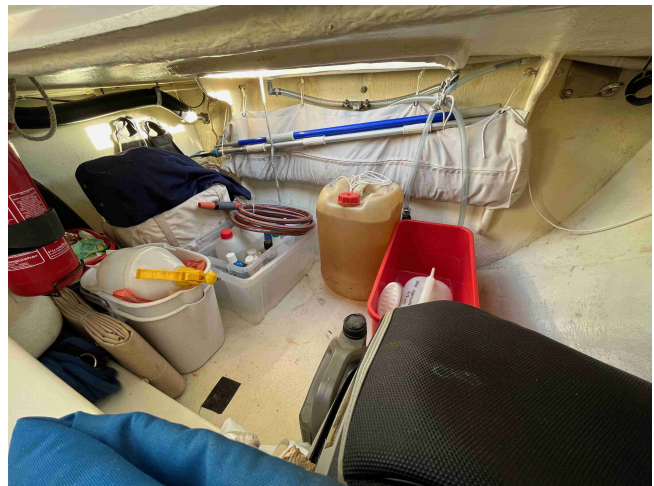
Large double berth extending under cockpit
Opening portlight
Ample stowage

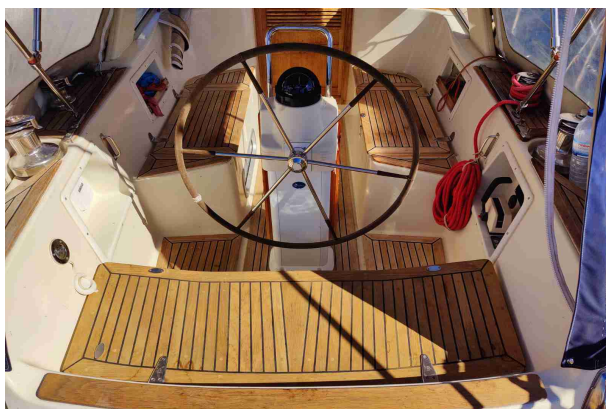


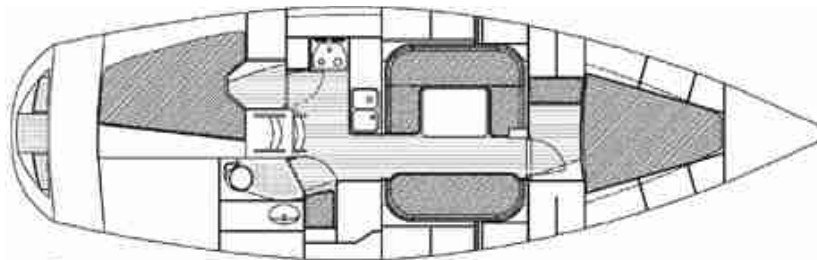












In this transaction we are acting as Brokers only. We are informed that this sale is not related to the Owner's business, trade or profession Whilst every care has been taken in their preparation, the correctness of these particulars is not guaranteed. The particulars are intended only as a guide and they do not constitute a term of any contract. A prospective buyer is strongly advised to check the particulars and where appropriate to have the vessel fully surveyed and inspected, sea trialled and opened up.