



Malö Yachts 36

Built by Malö Yachts AB, Kungsviken, Sweden in 2005
Lying South Coast, UK

Price £ 145,000.00 UK VAT Paid



The Malo 36 offers spacious family cruising in a comfortable and incredibly safe and seaworthy yacht. The large, deep cockpit offers exceptional protection. Large cockpit lockers and stowage throughout the interior. Appreciation is a lightly used example of this popular model. Steadily maintained and updated with recent electronics and rigging. A super cruising yacht for short-handed and family sailing. Available to view ashore by appointment.

LOA	11.35m	(37'3")
Beam	3.48m	(11'5")
Draught	1.75m	(5'9")
Displacement	7,500kg	(16520lbs)

Malö Yachts

Malö Yachts UK – Lymington Yacht Haven – Kings Saltern Road – Lymington – Hampshire SO41 3QD – +44 (0)1590 676782 – sales@maloyachts.co.uk –
www.maloyachts.co.uk

Malö Yachts UK is a trading name of DFD Marine Ltd Registered Company No. 7412841



Hull, Deck and Cockpit

Hand laid teak on deck, coach roof and cockpit
Insulated hull with lead keel
White gel coat with blue style stripe on hull and coachroof
Sugar scoop transom with built in bathing platform
Integral solid moulded rubbing strake
Fixed windscreen
Targa arch with mainsheet traveller over cockpit
Opening guardrails port and starboard
Wheel steering, rod driven, with emergency tiller
Sprayhood and cockpit cover **NEW 2017**
Folding cockpit table in teak
Bow thruster 6 HP Duo Prop
15kg Bruce anchor, 40m chain
Stern anchor with chain and rope
Electric Lofrans windlass in anchor locker
Wireless remote control for both bow thruster and windlass
Large Lewmar Ocean deck hatches

Safety Equipment

Liferaft in canister on pushpit **service out of date**
Manual bilge pump, Electric bilge pump
Fire extinguishers
Gas Safety check with Certificate September 2023
Jackstays
Lifebuoy with light x 2
Ambassador Stripper rope cutter on shaft
Radar Reflector Firdell Blipper on Mast

Rigging and Sails

Deck stepped Seldén mast with twin spreaders
Stainless Steel standing rigging NEW 01/2017
Fully battened mainsail on roller bearing Selden cars
Mainsail cover, stackpack with lazyjacks
Harken headsail furler, **serviced 2017**
Sanders Furling genoa 110% **NEW 2017**
Cruising Chute with snuffer
Andersen winches in cockpit and mast
Aluminium rigging screw covers
Rigid vang Selden Rodkick with gas strut
Track on mast for spinnaker pole
Tricolour/anchor light at masthead LED **NEW 2017**
Deck light LED **NEW 2017**

Engine and Tankage

Yanmar 40HP, 3-cylinder diesel engine
Shaft drive, Aquadrive flexible coupling
Stainless steel holding tank
Stainless steel fuel tank 235l/52gal
Stainless steel water tanks 400l/88gal
Brunton Autoprop 3-bladed propellor
Shaft rope cutter

Malö Yachts



Electronics

Raymarine Speed, wind and depth displays in cockpit
Raymarine Quantum 2 @24D Radar Scanner on mast **NEW 10/2021**
Raymarine Axiom Pro 12S Multifunction display in pedestal pod **NEW 10/2021**
Raymarine Axiom Pro 9S Multifunction display at chart table **NEW 10/2021**
Raymarine AIS700 AIS Transceiver **NEW 10/2021**
Raymarine GPS
Raymarine ST6000+ Autopilot
DSC VHF radio Simrad RD68
240V shore power system including water heater, battery charger and 4 outlets
Switch panel at chart table with circuit breakers; fuel, water and volt gauges
Domestic battery bank 3 x SG12-128 Rolls AGM
Engine battery
Galvanic Isolator

Interior

Pressurised hot and cold water system
Corian surface in galley
Calorifier **NEW October 2023**
Forward facing chart table
Eberspacher diesel cabin heater
Radio/CD player, speakers in saloon and cockpit
Access to engine under companionway steps
Fitted carpets in sleeping cabins

Galley

Double stainless steel sink
Water cooled refrigerator
Two burner SMEV cooker with oven and grill

Forward cabin

Opening portlights
V Berth
Numerous cupboards and wardrobes
Large storage drawers under berth
Large deck hatch with blind

Saloon

Opening portlights
Large dining table with fold up leaf
Settee to ports and starboard sides
Sea berths port and starboard
Ceiling and bulkhead light fittings
Large deck hatch

Head

Raritan sea toilet with holding tank
Basin with hot and cold tap/pull out shower
Shower drain pump
Opening portlight

Aft Cabin

Opening portlight
Double berth with storage under and access to engine room
Good storage in lockers and wardrobes
Overhead escape hatch to cockpit

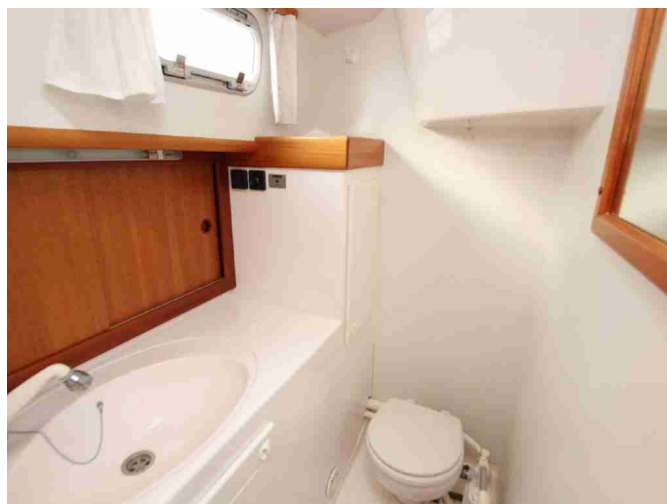
Malö Yachts



Malö Yachts

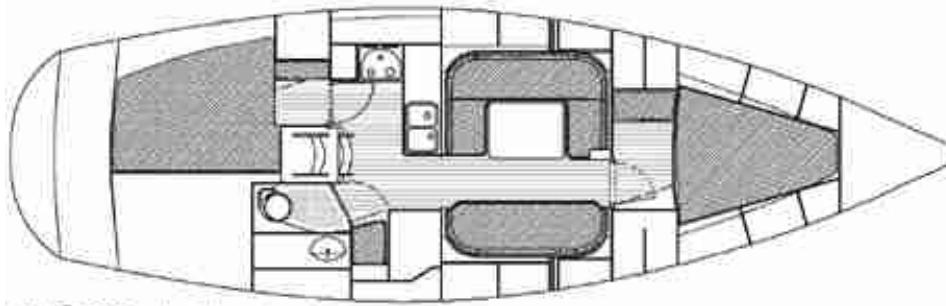
Malö Yachts UK – Lymington Yacht Haven – Kings Saltern Road – Lymington – Hampshire SO41 3QD – +44 (0)1590 676782 – sales@maloyachts.co.uk –
www.maloyachts.co.uk

Malö Yachts UK is a trading name of DFD Marine Ltd Registered Company No. 7412841



Malö Yachts

Malö Yachts UK – Lymington Yacht Haven – Kings Saltern Road – Lymington – Hampshire SO41 3QD – +44 (0)1590 676782 – sales@maloyachts.co.uk –
www.maloyachts.co.uk
Malö Yachts UK is a trading name of DFD Marine Ltd Registered Company No. 7412841



MALÖ 36 Standard layout



MALÖ 36
Standard version

In this transaction we are acting as Brokers only. We are informed that this sale is not related to the Owner's business, trade of profession. Whilst every care has been taken in their preparation, the correctness of these particulars is not guaranteed. The particulars are intended only as a guide and do not constitute a term of any contract. A prospective buyer is strongly advised to check the particulars and where appropriate to have the vessel fully surveyed and inspected, sea trialled and opened up.

Malö Yachts

Malö Yachts UK – Lymington Yacht Haven – Kings Saltern Road – Lymington – Hampshire SO41 3QD – +44 (0)1590 676782 – sales@maloyachts.co.uk –
www.maloyachts.co.uk

Malö Yachts UK is a trading name of DFD Marine Ltd Registered Company No. 7412841