

## Malö Yachts 36

"Gloriana"

**Price £ 130,000 VAT PAID**



*Gloriana* is incredibly well maintained and well equipped. Constant updating means she is ready to sail away. All aspects of comfortable cruising have been considered and *Gloriana* features an extensive sail wardrobe with large downwind sails for light conditions and an easy gear change in stronger conditions by way of a furling staysail. She has excellent charging capacity through a combination of alternator booster, solar panels and wind generator. Navigation is handled by a new Raymarine chartplotter/radar display, backed up by a PC based system. With an almost new mainsail and a choice of genoas, she is ready for serious cruising. *Gloriana* has sailed around the south and west coasts of the UK and as far south as northern Spain but never long distance ocean passages. She is presented in excellent condition and available to view by appointment.

The Malö 36 offers spacious family cruising in a comfortable and incredible safe and seaworthy yacht. The large, deep cockpit offers exceptional protection. Large cockpit lockers and stowage throughout the interior easily handle cruising and live-aboard equipment.

Built by Malö Yachts AB, Kungsviken, Sweden in 1999

LOA	11.35m	(37'3")
Beam	3.48m	(11'5")
Draught	1.80m	(5'9")
Displacement	7700kg	(16975lbs)

Lying: Solent, UK

**Malö Yachts**

Malö Yachts UK – Lymington Yacht Haven – Kings Saltern Road – Lymington – Hampshire SO41 3QD – +44 (0)1590 676782  
sales@maloyachts.co.uk - www.maloyachts.co.uk  
Malö Yachts UK is a trading name of DFD Marine LTD Registered Company No. 7412841



## Hull, Deck and Cockpit

Hand laid teak on deck, coach roof and cockpit  
Insulated hull with encapsulated keel  
Off-white gel coat with blue style stripe on hull and coachroof  
Transom with bathing/boarding ladder and integral steps  
Integral solid moulded rubbing strake  
Fixed windscreen with safety glass  
Grab handles on targa arch and coachroof  
Targa arch with mainsheet traveller over cockpit  
Large cockpit lockers and double gas locker  
Lights in Targa arch  
Wheel steering with emergency tiller  
Pedestal with safety grab handle and mug holder  
Steering compass in binnacle **NEW 2021**  
Sprayhood and full height cockpit canopy **NEW 2021**  
Folding cockpit table in teak  
Bow thruster Sidepower duoprop SE80 with touch panel  
Thruster foot controls (**Fitted NEW 2010**)  
Windlass Lofrans Kobra, electric, mounted in chain locker  
Wireless remote control for bow thruster and windlass  
Bruce Type anchor stowed in stem, 60M 8mm chain  
Fortress Anchor 10M chain and 30M warp  
Bow roller on stem head  
Inflatable dinghy Honwave (**NEW 2023**)  
Bracket on pushpit for outboard motor  
Hot and cold cockpit shower  
Fenders and mooring lines



## Electronics and Electrical

Raytheon ST60 speed, wind, depth and multi instruments in cockpit  
Raytheon ST60 Multi at chart table  
Raymarine Axiom Pro 9 plotter at pedestal in Scanstrut pod **NEW 2021**  
Raymarine RadarQuantum Doppler scanner on mast **NEW 2021**  
Raymarine GPS Receiver  
Digital Yacht Aqua Compact Pro PC (**NEW 2018**) with monitor and  
Seapro Standard v11 software, digital charts UK, Eire, France N/W,  
Portugal and Spain (**2018**)  
Digital Yacht AIT250 AIS Transceiver (B), displayed on chart plotter  
Simrad AP11 Autopilot with wired remote  
ICS NAV6 Navtex  
Simrad RS87 DSC VHF, masthead antenna, handset at chart table  
Simrad AHS87 VHF remote at helm  
Icom M35 waterproof handheld VHF with charging bracket (**2017**)  
Mailsail Red Box router – creates on board WiFi network to distribute  
3G, WLAN, satellite and NMEA data.  
240V shore power - battery charger Sterling 30Amp, outlets, water heater  
Domestic battery bank AGM 345Ah – 3 x Rolls 128 (2013)  
Battery Monitor Link 10  
Engine starter battery, separate with emergency link to domestic bank  
Rutland 914i wind generator (**2011**)  
Sterling A2B charger 80Amp (boosts charge from engine alternator)  
2 x Solbian solar panels (total 144 watts) easily removable when  
not required (2014) with dedicated stowage under saloon seats  
Control panel with circuit breakers, battery monitor and tank gauges  
16" LED TV with Freeview/HD/DVD (**2012**)  
Alpine CD/USB/Bluetooth Stereo, speakers in saloon and cockpit  
12 volt and USB sockets cockpit  
Double USB outlet at chart table  
12 volt and USB outlet in forward cabin  
Lights in targa arch



**Malö Yachts**





## Safety Equipment

CE Design Category A – Ocean  
Ocean Safety Liferaft 4 person Ocean ISO 9650 **(2017, serviced 2023)**  
McMurdo EPIRB Smartfind G5 (Needs new battery)  
SeaMe active radar reflector **(2009)**  
Pilot Gas alarm with 2 sensors  
2 x Carbon Monoxide detectors fitted 2023  
Smoke Alarm in galley fitted 2023  
Electric and manual bilge pumps  
Fire extinguishers and fire blanket  
Webbing jack stays  
Life buoy  
Inflatatble Danbuoy and horseshoe buoy **(NEW 2020)**  
Radar reflector on mast  
Side, stern and steaming lights to pushpit/pulpit, all LED  
Deck light, steaming light and anchor light on mast, all LED



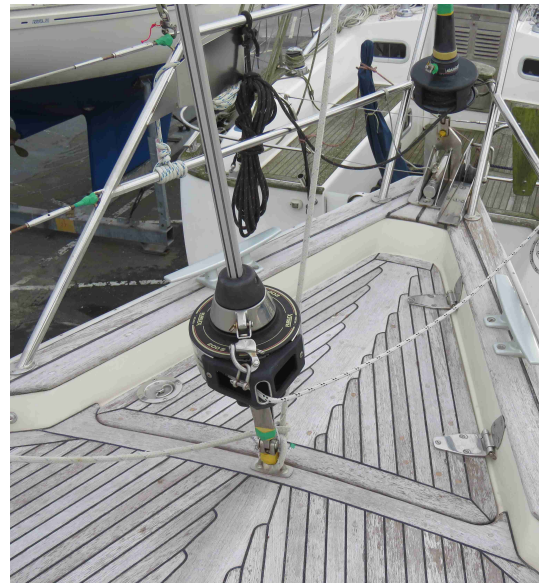
## Rigging and Sails

Deck stepped Selden mast with double pair of spreaders

**Standing rigging replaced 2014**

**Full rig check 2020**

Aluminium covers for rigging screws  
Fully Battened Mainsail with 3 reefs **(Brand NEW 2020)**  
Stackpack type mainsail cover **(New 2020)**  
Furling Genoa 130% High cut Vektran  
Furling Working Jib 110%  
Harken headsail furler, serviced 2020  
Selden Furlex Staysail furler **(2014)**  
Heavy weather furling staysail for inner forestay **(2014)**  
Cruising Chute with snuffer  
Symmetrical spinnaker with snuffer  
Spinnaker pole stowed on mast  
Gas filled Selden Rod kicker (positive lift for boom for light winds and easy reefing, **2010**)  
Detachable stainless steel bowsprit for cruising chute tack  
Harken towable genoa cars, adjustable from cockpit **(2013)**  
Andersen winches in cockpit (4) and on mast (1)  
2 genoa halyards, 2 main halyards, 1 spinnaker halyard



## Engine and Tankage

Yanmar 47hp, 3-cylinder diesel engine, serviced May 2023  
Aquadrive flexible shaft coupling  
Cutlass bearing replaced 2023  
3 blade Maxprop feathering propellor  
Ambassador rope cutter to shaft **(NEW 2020)**  
Stainless steel holding tank  
Stainless steel fuel tank 235 litres  
Stainless steel water tanks 400 litres



**Malö Yachts**



## Interior

Beautifully handcrafted mahogany interior  
Teak flooring and carpets throughout  
Pressurised hot and cold water system  
Hot water tank calorifier with electric immersion heater  
Ardic 042-D diesel cabin heater, outlets in all cabins  
Warm LED lighting throughout, saloon light upgraded at build  
Easy access to engine  
Wide companionway steps  
Grab handles throughout interior  
Opening portlights throughout  
Ample stowage in numerous lockers  
Dorade vents in saloon and forecabin

## Galley

Mixer tap for hot and cold water  
Whale manual tap/pump - **NEW 2020**  
Double stainless steel sink  
Top opening refrigerator in galley worktop  
Two burner cooker with oven, grill and light  
Ample storage in cupboards, lockers and drawers  
Pull out teak chopping board

## Forward cabin

Large double berth with pocket sprung mattress  
Numerous cupboards and 2 wardrobes  
Large storage drawers under berth  
Large opening deck hatch with blind  
Large mirror to bulkhead

## Saloon

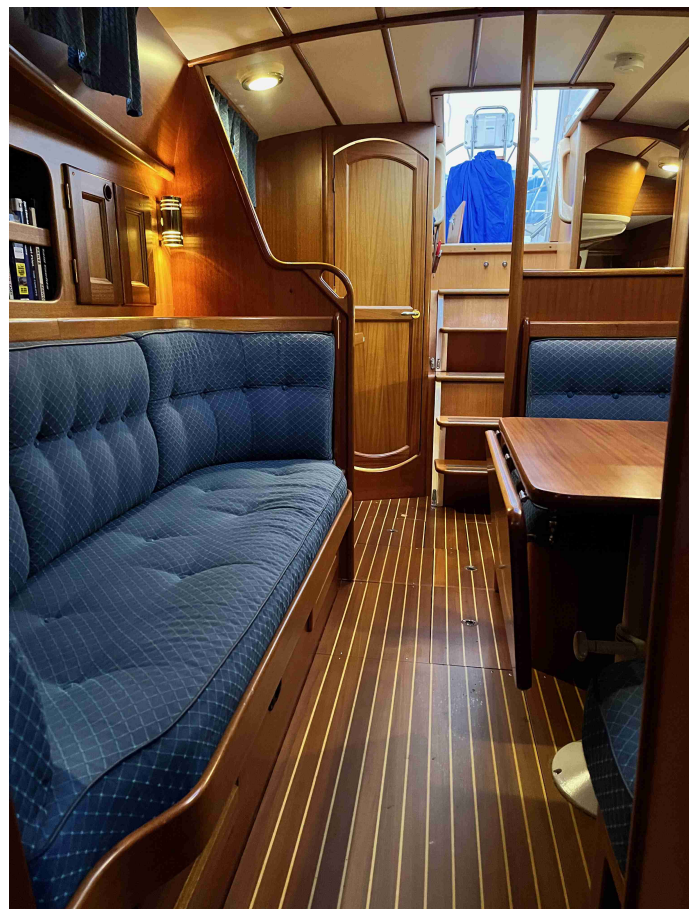
Spacious saloon with contoured seating  
U-shaped settee and large folding dining table to port  
Settee to starboard  
Forward facing chart table with chart storage and drawers  
Chart seat with storage below  
Lee cloths to sea berths  
Large opening deck hatch with blind  
Numerous storage cupboards and lockers

## Head

Raritan PHII manual sea toilet with holding tank  
Serviced with new hoses 2022  
Mixer tap with shower head  
Shower with electric drain pump  
Ample storage in lockers

## Aft Cabin

Double berth access to engine space  
Good storage in numerous lockers and wardrobe  
Overhead escape hatch to cockpit



**Malö Yachts**





**Malö Yachts**

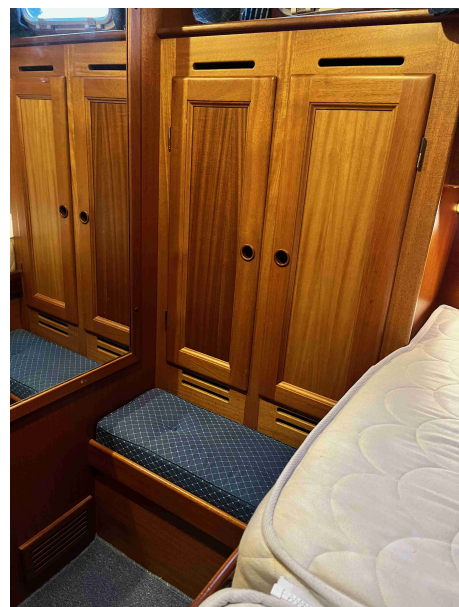
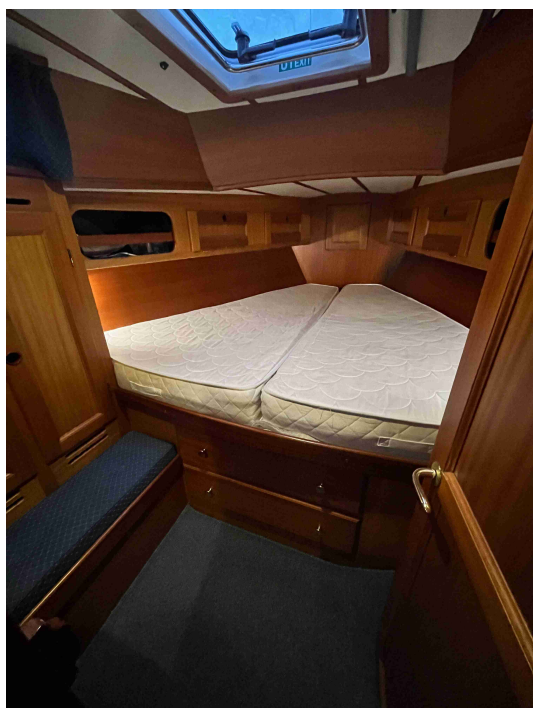
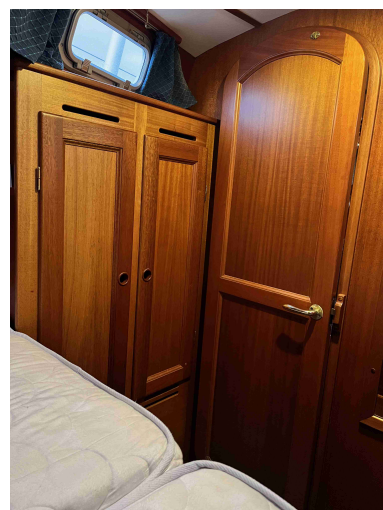
Malö Yachts UK – Lymington Yacht Haven – Kings Saltern Road – Lymington – Hampshire SO41 3QD – +44 (0)1590 676782  
sales@maloyachts.co.uk - www.maloyachts.co.uk  
Malö Yachts UK is a trading name of DFD Marine LTD Registered Company No. 7412841



**Malö Yachts**

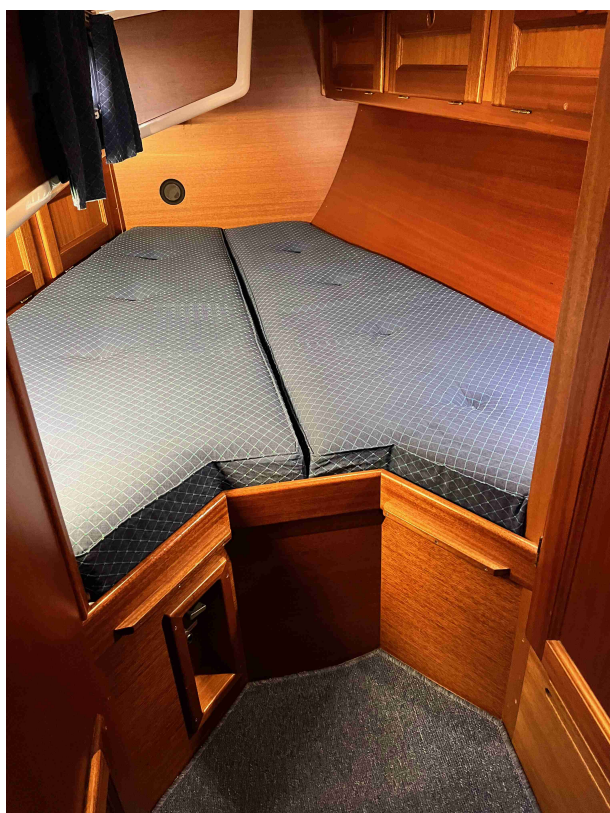
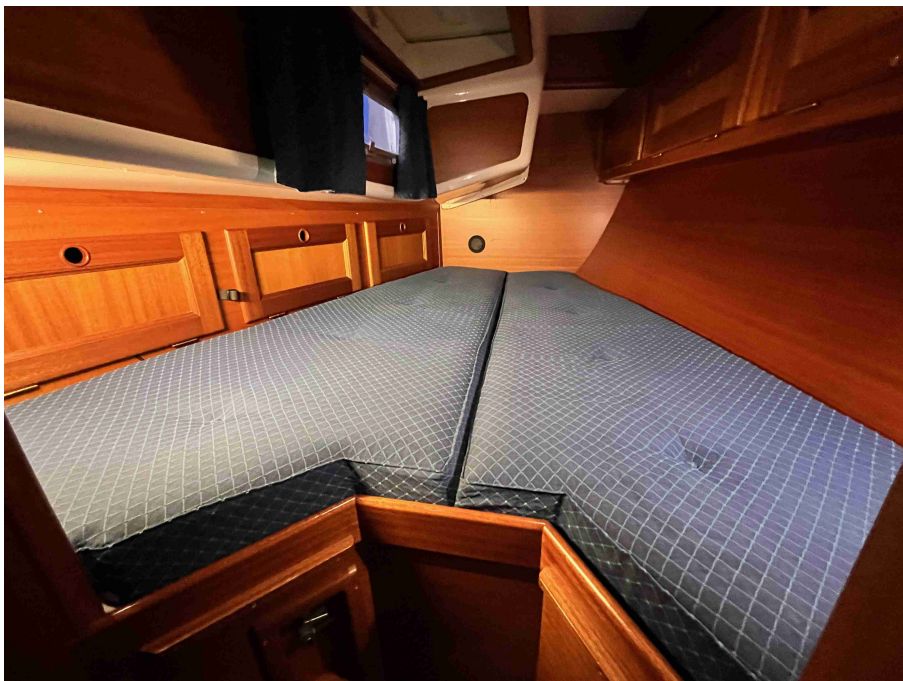
Malö Yachts UK – Lymington Yacht Haven – Kings Saltern Road – Lymington – Hampshire SO41 3QD – +44 (0)1590 676782  
sales@maloyachts.co.uk - www.maloyachts.co.uk  
Malö Yachts UK is a trading name of DFD Marine LTD Registered Company No. 7412841





**Malö Yachts**

Malö Yachts UK – Lymington Yacht Haven – Kings Saltern Road – Lymington – Hampshire SO41 3QD – +44 (0)1590 676782  
sales@maloyachts.co.uk - www.maloyachts.co.uk  
Malö Yachts UK is a trading name of DFD Marine LTD Registered Company No. 7412841



**Malö Yachts**

Malö Yachts UK – Lymington Yacht Haven – Kings Saltern Road – Lymington – Hampshire SO41 3QD – +44 (0)1590 676782  
sales@maloyachts.co.uk - www.maloyachts.co.uk  
Malö Yachts UK is a trading name of DFD Marine LTD Registered Company No. 7412841

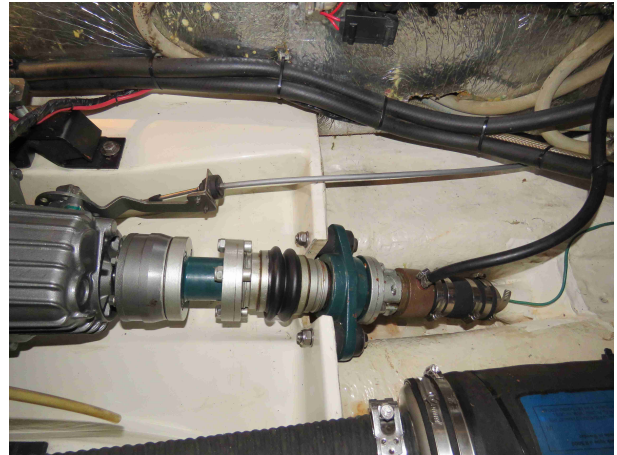




**Malö Yachts**

Malö Yachts UK – Lymington Yacht Haven – Kings Saltern Road – Lymington – Hampshire SO41 3QD – +44 (0)1590 676782  
sales@maloyachts.co.uk - www.maloyachts.co.uk  
Malö Yachts UK is a trading name of DFD Marine LTD Registered Company No. 7412841





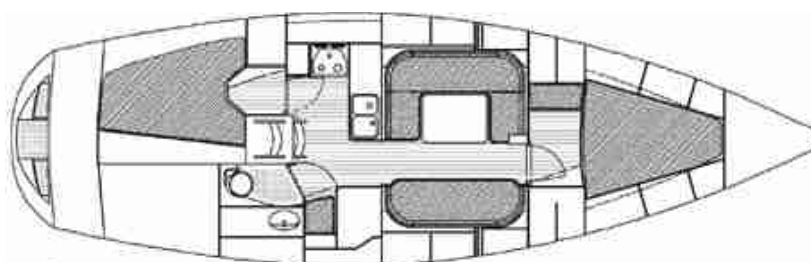
**Malö Yachts**

Malö Yachts UK – Lymington Yacht Haven – Kings Saltern Road – Lymington – Hampshire SO41 3QD – +44 (0)1590 676782  
sales@maloyachts.co.uk - www.maloyachts.co.uk  
Malö Yachts UK is a trading name of DFD Marine LTD Registered Company No. 7412841





*In this transaction we are acting as Brokers only. We are informed that this sale is not related to the Owner's business, trade or profession Whilst every care has been taken in their preparation, the correctness of these particulars is not guaranteed. The particulars are intended only as a guide and they do not constitute a term of any contract. A prospective buyer is strongly advised to check the particulars and where appropriate to have the vessel fully surveyed and inspected, sea trialled and opened up.*



**Malö Yachts**