
Malö Yachts 38

“Harmony of Burnham”

£ 80,000 VAT paid

Much loved by her owners who have enjoyed her for over 20 years. Presented in lovely condition and ready for the season ahead. A new Yanmar engine in 2008 and a collection of cruising equipment, Harmony would benefit from an electronics upgrade and she will be ready to explore new cruising grounds.

Built by Malö Yachts AB, Kungsviken, Sweden in 1989

LOA	11.65m	(36.11”)
Beam	3.37m	(11'1”)
Draught	1.70m	(5'7”)
Displacement	6500kg	(14300lbs)

Lying: Lymington, UK



In this transaction we are acting as Brokers only. We are informed that this sale is not related to the Owner's business, trade or profession Whilst every care has been taken in their preparation, the correctness of these particulars is not guaranteed. The particulars are intended only as a guide and they do not constitute a term of any contact. A prospective buyer is strongly advised to check the particulars and where appropriate to have the vessel fully surveyed and inspected, sea trialled and opened up.

Malö Yachts

Malö Yachts UK – Lymington Yacht Haven – Kings Saltern Road – Lymington – Hampshire SO41 3QD – +44 (0)1590 676782
sales@maloyachts.co.uk – www.maloyachts.co.uk
Malö Yachts UK is a trading name of DFD Marine Ltd Registered Company No. 7412841



Hull, Deck and Cockpit

Hand laid teak on deck, coach roof and cockpit
Insulated hull with encapsulated keel
Hull epoxy primed
Cream gel coat with blue style stripe on hull and coachroof
Bathing platform with ladder on transom
Integral solid moulded rubbing strake
Fixed windscreen with safety glass
Targa arch with mainsheet traveller over cockpit
Wheel steering + emergency tiller
Steering pedestal with compass and guard rail
Sprayhood and cockpit canopy (2021)
Large cockpit table
Bruce anchor, 50m 8mm chain (new 2023)
Anchor chain hook
Kedge anchor with reel line
Lofrans Electric windlass (new 2021)
Self tailing Andersen winches
Sail locker in foredeck
Outboard bracket on push pit
Large cockpit lockers
Hydrovane self steering system mounted on transom
3 x deck hatches replaced 2022
Cockpit cushions
Boat hooks
Warps and fenders

Safety Equipment

EPIRB
Liferaft Seago, 4 person, needs service
Manual bilge pump
Auto bilge pump
Fire extinguishers
Fire blanket
Anchor light at masthead
Radar reflector
Inflatable Danbuoy
Webbing jack stays
Life buoy
Seabrake Drogue with bridle
Bosun's chair
Jackstays

Rigging and Sails

Deck stepped Selden mast with double pair of spreaders
Stainless steel standing rigging approx 10 years old
Rigid vang
Removable inner forestay
Selden in-mast mainsail reefing system
Maxi Roach Mainsail
Selden Furlex genoa furler system
Furling genoa 150%
Furling Genoa 120%
Staysail
Storm Jib
Storm Trisail
Cruising chute
Spinnaker pole stowed on mast
Adjustable genoa cars (from cockpit)

Malö Yachts



Electronics

Raytheon ST60 Wind, depth and speed instruments at companionway
Radar and chartplotter fitted but not functioning
VHF Icom M603 with command mic
Autohelm ST400 wheel mounted autopilot
Navtex
Furuno Weather Fax
240V shore power system including battery charger, sockets and water heater
Domestic battery bank 4 x Varta
Engine starter battery
Rutland 914 wind generator (new 2022)
Inverter

Engine and Tankage

Yanmar 39HP diesel engine , 2008, approx 1,000 hours, last service April 2022
Stainless steel holding tank
Stainless steel fuel tank 180l / 40gal
Stainless steel water tank 220l / 50gal

Interior

Pressurised hot and cold water system
High quality upholstery, curtains throughout
Forward facing chart table & seat
Switch panel with circuit breakers and gauges at chart table
Access to engine under companionway steps
Mikuni diesel heating

Galley

Hot and cold water
Double stainless steel sink
12 volt refrigerator
Dometic 3 burner cooker with oven and grill
Storage in cupboards and drawers

Forward cabin

Large double berth with storage underneath
Large opening deck hatch
Storage shelves and cupboards
Wardrobes

Saloon

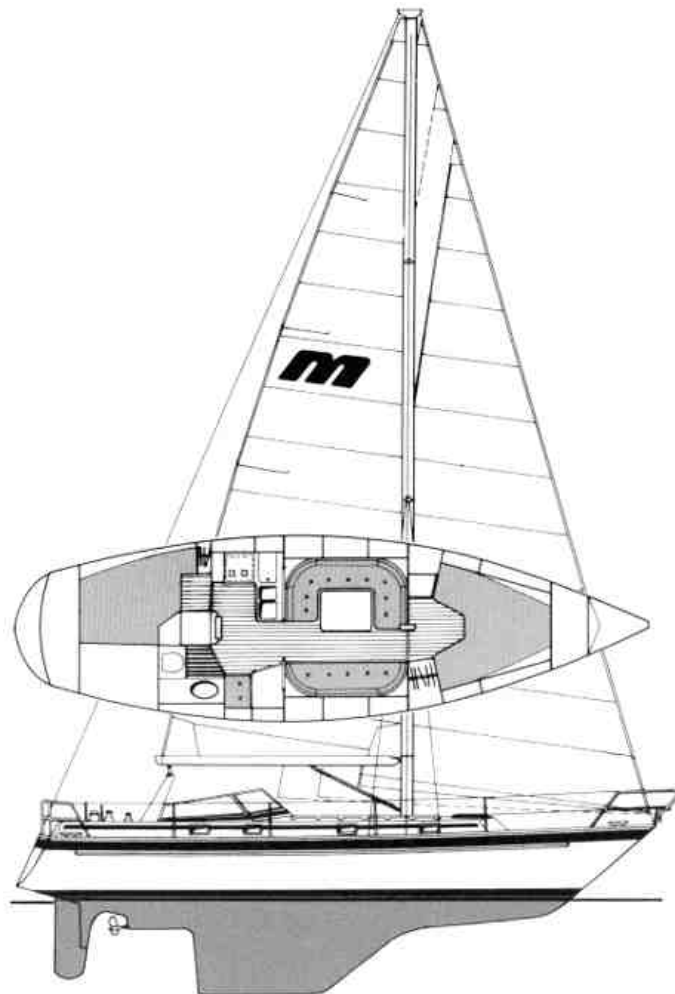
U-shaped settee and large folding dining table to port
Settee to starboard
Sea berths port and starboard with lee cloths
2 x opening deck hatches
Numerous storage cupboards and lockers

Head

Sea toilet with holding tank
Hot and cold tap with integrated shower head
Storage space in lockers and cupboards

Aft Cabin

Large double berth with infill cushion
Wardrobe
Opening portlight

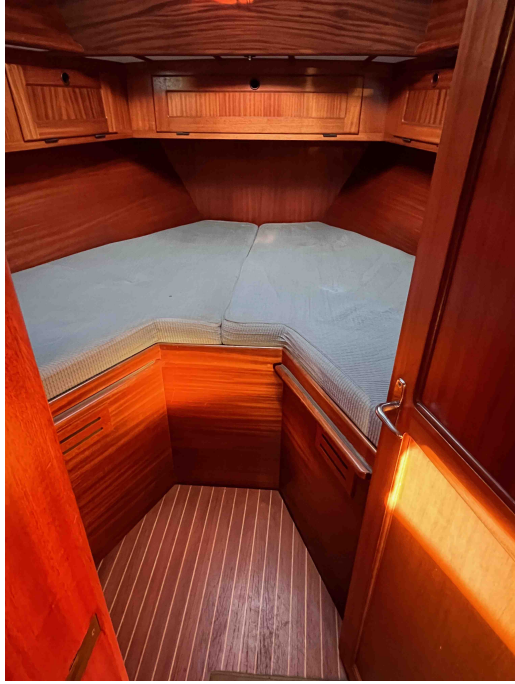


Malö Yachts



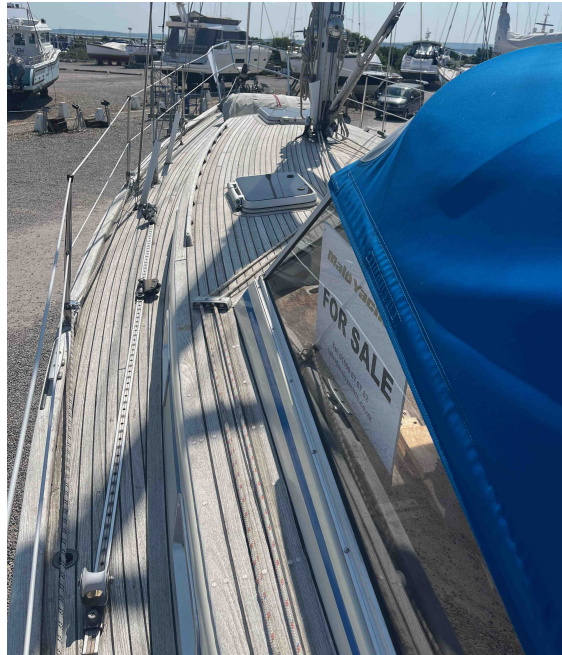
Malö Yachts

Malö Yachts UK – Lymington Yacht Haven – Kings Saltern Road – Lymington – Hampshire SO41 3QD – +44 (0)1590 676782
sales@maloyachts.co.uk – www.maloyachts.co.uk
Malö Yachts UK is a trading name of DFD Marine Ltd Registered Company No. 7412841



Malö Yachts

Malö Yachts UK – Lymington Yacht Haven – Kings Saltern Road – Lymington – Hampshire SO41 3QD – +44 (0)1590 676782
sales@maloyachts.co.uk – www.maloyachts.co.uk
Malö Yachts UK is a trading name of DFD Marine Ltd Registered Company No. 7412841



Malö Yachts

Malö Yachts UK – Lymington Yacht Haven – Kings Saltern Road – Lymington – Hampshire SO41 3QD – +44 (0)1590 676782
sales@maloyachts.co.uk – www.maloyachts.co.uk
Malö Yachts UK is a trading name of DFD Marine Ltd Registered Company No. 7412841