
Malö Yachts 39

“Kumari”

£ 179,000 VAT PAID

A very popular offshore cruiser, the Malö 39 is a very capable yacht with a spacious interior and very safe cockpit. Kumari is equipped for world cruising, she has sailed the Atlantic and is currently in the Mediterranean Sea. Her specification includes many cruising essentials including wind generator, wind pilot, a range of sails and full electronics and communications package.



Built by Malö Yachts AB, Kungsviken, Sweden in 1998

LOA	12.24m	(40'16")
Beam	3.76m	(12'33")
Draught	1.83m	(6')
Displacement	8.9t	(19,621lbs)

Lying: Croatia



Malö Yachts



Hull, Deck and Cockpit

Hand laid teak on deck, coach roof and cockpit
Insulated hull with encapsulated keel
Cream gel coat with blue style stripe on hull and coachroof
Sugar scoop transom with built in steps and folding bathing ladder
Teak outboard bracket on pushpit
Integral solid moulded rubbing strake
Fixed windscreen with safety glass and opening panel for ventilation
Targa arch with mainsheet traveller over cockpit
Lights in Targa arch
Opening gates in guardrails port and starboard
Wheel steering + emergency tiller
Steering pedestal with compass and grab-rail
Sprayhood and full height cockpit canopy in beige
Heavyweight PVC winter covers for sprayhood, cockpit canopy and deck
Folding cockpit table in teak varnished
Drinks holder
Folding seat extensions in teak
Bespoke cockpit cushions
Bow thruster Duo-Prop 7hp, **New motor 2006**
20kg Bruce anchor + 60m chain
A15 anchor Vetus + 10m chain and 50m warp
Anchor bracket in chain locker
Electric windlass Lofrans with remote control
Extra bow roller for second anchor
Andersen self tailing winches 2-speed
Hydrovane wind-steering **New 2006**
Wind generator Aerogen 6 **New 2009**
4-man inflatable dinghy Avon
Outboard engine Mercury 3hp **New 2008**
Cockpit shower hot and cold

Safety Equipment

Liferaft Viking 6 person UK std GRP mounted on pushpit in cradle **New 2006, next service 2013**
Electric and manual bilge pumps (Submersible electric bilge pump **New 2010**)
Fire extinguisher x 5 fully serviced
Tricolour/anchor light at masthead
Webbing jack stays
Life buoy x 2
Flares Ocean set

Rigging and Sails

Standing rigging **replaced April 2011**
Running rigging **replaced 2006**
Deck stepped Selden mast with double pair of spreaders
Rigid vang
Fully battened mainsail with "stack pack" cover and single line reefing
Selden RCB batten car mainsail system
Furling genoa 140% Dacron, Selden Furlex furler
No 2. tri-radial genoa 125% Dacron
Storm jib, Dacron
Hank-on inner forestay for storm jib
Full spinnaker kit with mast-stowed pole and sail (New 2006) little used
Aluminium rigging screw covers

Malö Yachts



Engine and Tankage

Yanmar 4JH3(B)E 41 56HP 4 cylinder engine
Stainless steel holding tank for each heads – gravity drain or deck pump out
Stainless steel fuel tank 280l
2 x Stainless steel water tanks, total capacity 455l
Flex-o-Fold 3-bladed folding propellor, built in shaft log
Spare 3-bladed fixed propellor (original)
Flexible shaft coupling, Aqua Drive
Rope cutter on shaft
Racor fuel filter **New 2008**

Electronics

Wind, depth, speed instruments at companionway Robertson / Simrad
Multi repeater Robertson at nav. station
Navtex Nav 4
Raymarine E80 chartplotter at companionway **New 2006**
Autopilot Robertson, drive unit serviced 2010
Raymarine radar, mounted on mast **New 2006**
GPS Raystar 125 mounted on push pit
SSB receiver NASA at nav. station **New 2006**
VHF Icom M601 DSC at nav. station **New 2006**
VHF handheld
Satellite telephone system Iridium IMF 1000 at nav Station **New 2006**
Sterling Smart Regulator **New 2010**
Alternator **New 2011**
Diode splitter **New 2010**
240V shore power system including Morven automatic battery charger and 3 outlets
2 x 140Ah deep cycle traction wet domestic batteries **New 2010**
Engine starter battery 70Ah **New 2009**
Battman battery monitor system
2 x Unisolar USF 32W 2A flexible solar panels for trickle charging
2 x 12V socket at nav. station
1 x 12V socket in cockpit
1 x 12V socket in each heads compartment

Interior

Pressurised hot and cold water system
Diesel cabin heater Ardic
Isotemp calorifier
Large forward facing chart table
Switch panel with circuit breakers and gauges at chart table
Sony Radio/CD player, speakers in saloon and cockpit
Access to engine under companionway steps
Opening portlights throughout
High quality blue patterned upholstery throughout
Yellow / Gold curtains
Fitted Carpets - grey

Galley

Mixer tap for hot and cold water
Double stainless steel sink
Isotherm water cooled refrigerator with SP system – Overhauled in 2011
Two burner SMEV cooker with oven and grill
Ample storage in cupboards, lockers and drawers

Forward cabin

Large double berth with custom berth-length extension on port side
Numerous cupboards and wardrobes
Large storage drawers / space under berth
Large opening deck hatch

Malö Yachts



Forward en-suite heads compartment

Basin with mixer tap
Electric seawater flushing 100 head
Shower
Electric shower drain pump

Saloon

U-shaped settee and large folding dining table to port
Settee to starboard
Sea berths port and starboard with lee cloths
Large opening deck hatch
Numerous storage cupboards and lockers
Clock and barometer
Approximately 6'4" headroom

Aft heads compartment

Manual sea toilet **New pump unit 2006**
Basin with mixer tap with shower head
Electric shower drain pump
Cupboards & storage inc large wardrobe/wet locker

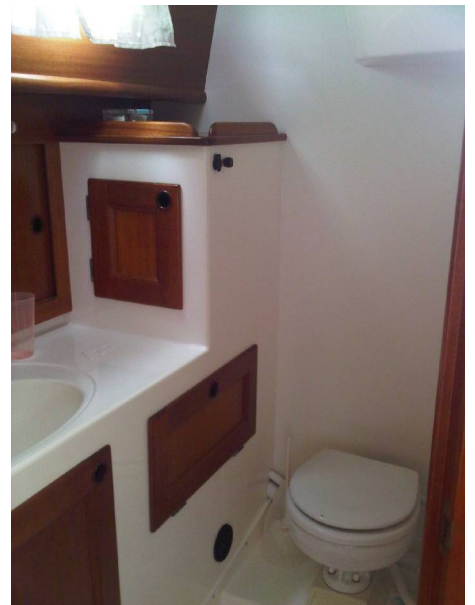
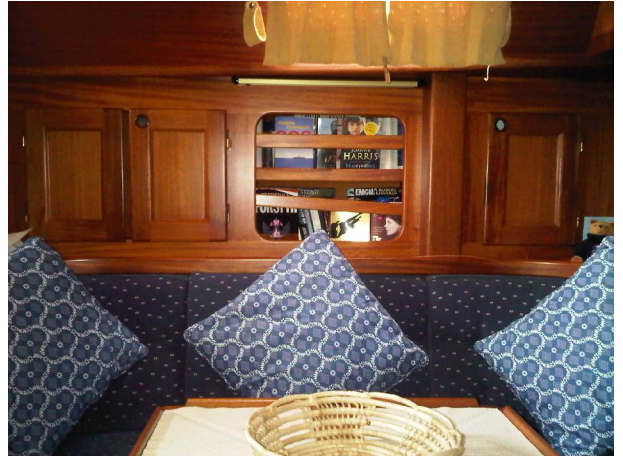
Aft Cabin

Double berth, storage under and access to engine
Ample storage in lockers and wardrobes
Overhead escape hatch to cockpit



In this transaction we are acting as Brokers only. We are informed that this sale is not related to the Owner's business, trade or profession Whilst every care has been taken in their preparation, the correctness of these particulars is not guaranteed. The particulars are intended only as a guide and they do not constitute a term of any contract. A prospective buyer is strongly advised to check the particulars and where appropriate to have the vessel fully surveyed and inspected, sea trialled and opened up.

Malö Yachts



Malö Yachts

Malö Yachts UK – Efford Park – Milford Road – Lymington – Hampshire SO41 0JD – +44 (0)1590 676782 – sales@maloyachts.co.uk – www.maloyachts.co.uk
Malö Yachts UK is a trading name of DFD Marine Ltd Registered Company No. 7412841