

Malö Yachts 40

“RONJA”

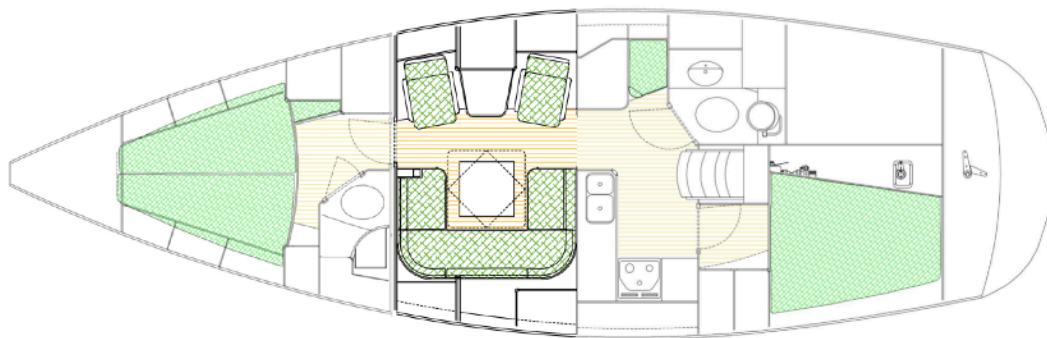
GBP 220,000.00 UK VAT paid



The Malö 40 is a solid, fast, offshore cruising yacht with a large cockpit, generous saloon, 2 cabins and 1 head and separate shower. “RONJA” is the ‘Classic’ version with extra aft deck space, a lazarette locker and a counter stern. There is extensive storage space in 2 further large cockpit lockers and throughout the interior. This Malö 40 has been impeccably maintained and updated and is presented for sale in superb condition both inside and out. Specification includes bow thruster, furling mainsail, recent chart plotter and radar and Coppercoat. Standing rigging has been replaced recently. The interior is like new and a superb living space for coastal exploring or ocean crossing. “RONJA” is available for viewing in Lymington. Please contact us to arrange an appointment.

Built by Malö Yachts AB, Kungsviken, Sweden in 2005

LOA	12.65 m	(41'6")	Plus bathing platform
Beam	3.83 m	(12'7")	
Draught	1.92 m	(6'2")	
Displacement	9,500 kg	(20,948 lbs)	
Lying:	Lymington, UK		



Malö Yachts



Hull, Deck and Cockpit

Hand laid teak on deck, coach roof and cockpit
Insulated hull with lead keel
White gel coat with navy blue style stripe on hull and coachroof
Integral solid moulded rubbing strake
Custom Stainless Steel and teak bathing platform with ladder (**NEW 2023**)
Coppercoat below waterline, applied August 2020
Bow Thruster - Side Power with Joystick controller at pedestal
Fixed windscreen with safety glass
Targa arch with mainsheet and traveller over cockpit
Large cockpit lockers and double gas locker
Opening guardrails port and starboard
Wheel steering and emergency tiller
Sprayhood and full height cockpit canopy
Folding teak cockpit table with extension
Hot and cold cockpit shower
Steering pedestal with compass and hand rail
Electric windlass, remote control, 20kg stainless steel anchor
65m stainless steel chain with Kong swivel (**New 2023**)
Self tailing Andersen winches
Folding teak seat extensions
Teak aft deck/pushpit seats
Stainless steel davit for outboard motor
Stainless steel bow ladder
Stainless steel stern anchor 15kg
Fenders and various mooring warps

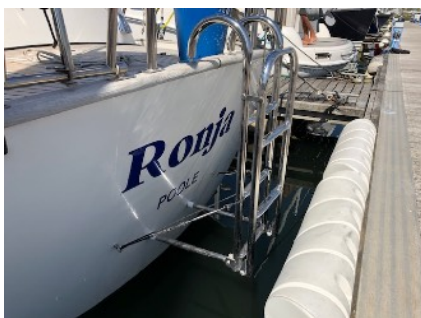


Electronics

Switch panel at chart table with circuit breakers for protection
Water, fuel and volt gauges and battery monitor panel
Raymarine Quantum Radar scanner on gimballed backstay mount
Raymarine Axiom 9 Plotter/radar display with remote keypad in Scanstrut helm pod
Raymarine ST60 Speed, wind, depth at companionway
Raymarine ST60 Multi at chart table
Raymarine ST6001 Autopilot
ICOM VHF M400BB DSC with Command Mic HM195B on steering pedestal (**Oct 2022**)
AIS Digital Yacht AIT 2000
240V shore power system including automatic 50 Amp battery charger, outlets and water heater
Domestic battery bank 345Ah Rolls Premium AGM (**2023**)
Engine starter battery (**2023**)
12 volt socket at chart table
Pioneer Bluetooth Stereo with speakers in saloon and cockpit

Safety Equipment

Liferaft in valise, 4 person **Serviced 2022**
Electric and manual bilge pumps
Fire extinguishers **NEW 2021**
Life buoy and light
Radar reflector on mast
LED Masthead tri-colour and anchor lights



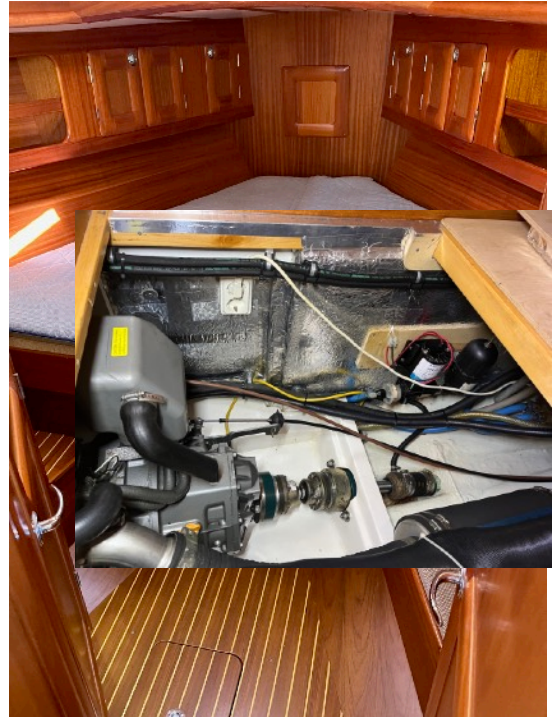
Malö Yachts



Rigging and Sails

Deck stepped Selden mast with double spreaders and LED deck light
Selden rigging screw covers and leather protectors for spreader ends
Stainless steel standing rigging and upper spreaders replaced in April 2022

Selden In-Mast furling system - Serviced April 2022
Harken Genoa furling system - Serviced April 2022
Selden rigid vang with internal gas spring (gas spring April 2022)
Dyneema main and genoa halyards (April 2022)
Fitting in mast for addition of inner forestay
Removable inner forestay (not currently fitted)
Deck fitting for removable inner forestay
Split backstay with adjuster
Furling mainsail, Original, Elvstrom, valeted 2024, good condition
Furling genoa, Sanders Vectron 135% (**NEW 2023**)
Original Elvstrom furling genoa in good condition
Staysail for inner stay (hank-on) Elvstrom
Cruising chute with snuffer, Elvstrom



Engine and Tankage

Yanmar 54hp, 4-cylinder diesel engine
Serviced annually, last service March 2023, including injector test and new coolant circulation pump
Flex-o-fold 3 blade folding propellor
Rope cutter to shaft
Stern tube and cutlass bearing replaced 2023
Stainless steel holding tank
Stainless steel fuel tank 260 litres
Stainless steel water tanks x 2 total 450 litres
Flexible shaft coupling, Aqua Drive

Interior

Beautiful hand crafted mahogany interior in excellent condition
Pressurised hot and cold water system
Hot water calorifier with electric immersion heater
Diesel fired Eberspacher cabin heater
Heater outlets in all cabins and heads
Large chart table with seat
Easy access to engine
Wide and shallow companionway steps
Opening portlights throughout - Lewmar Atlantic
High quality upholstery and fitted carpets throughout
Curtains to all portlights
Updated to LED lighting throughout

Galley

Mixer tap for hot and cold water
Double stainless steel sink
Spacious refrigerator, Isotherm SP water cooled for energy efficiency
Two burner ENO cooker with oven (**Gas check and certificate 2023**)
Corian galley surface with Corian cooker and sink covers for extra workspace
Ample storage in cupboards, lockers and drawers
Pull out teak chopping board



Saloon

Spacious saloon with high quality beige upholstery in excellent condition
U-shaped settee to port
Two armchairs and table with drinks cabinet to starboard
Malo feature folding dining table
Large opening deck hatch
Clock and barometer
Numerous storage cupboards and lockers

Malö Yachts

**Forward cabin**

Large double berth with sprung mattress and mattress topper
Large storage below berth
Numerous cupboards and 2 wardrobes
Large opening deck hatch with Oceanair blind/flyscreen

En-suite shower room

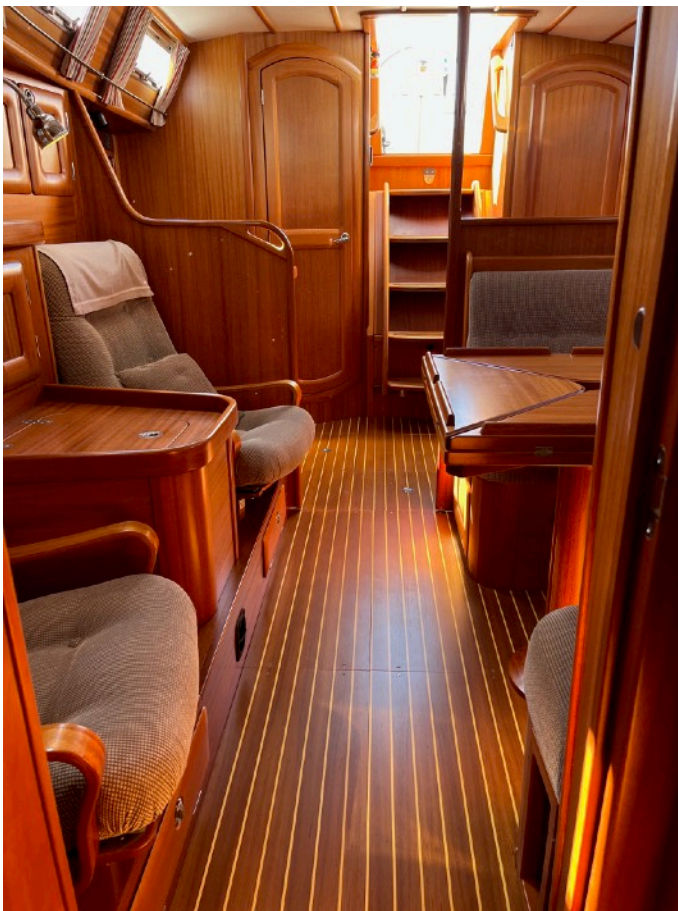
Shower with mixer tap and drain pump
Opening port light
Locker
Corian shower tray and teak seat

Head

Raritan sea toilet (serviced April 2023) with holding tank
Corian worktop with built in sink
Mixer tap
Shower drain pump
Ample storage in locker

Aft Cabin

Large double berth, storage under with access to engine room and engine start battery
Good storage in numerous lockers and wardrobe
Portlight to cockpit and to deck

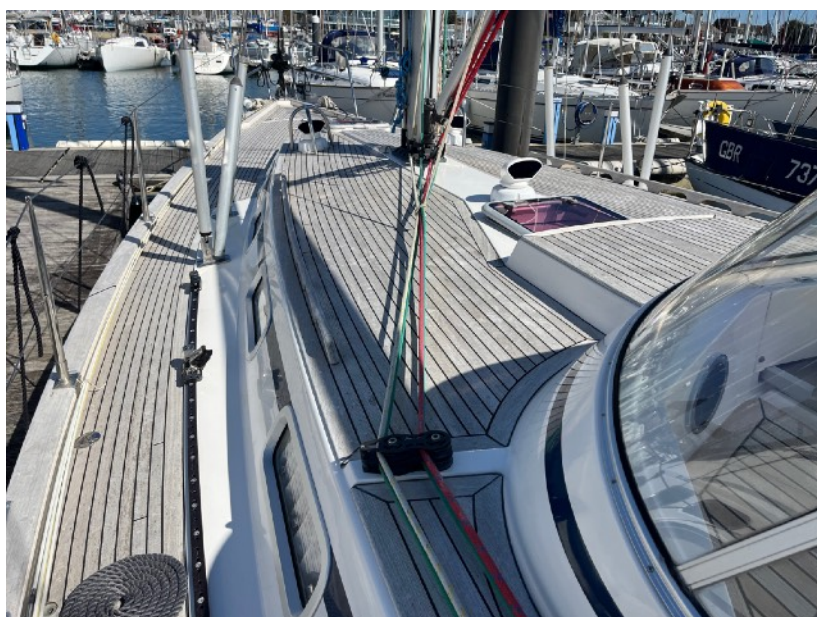


Malö Yachts



Malö Yachts

Malö Yachts UK – Lymington Yacht Haven – Kings Saltern Road – Lymington – Hampshire SO41 3QD – +44 (0)1590 676782
sales@maloyachts.co.uk - www.maloyachts.co.uk
Malö Yachts UK is a trading name of DFD Marine LTD Registered Company No. 7412841



Malö Yachts

Malö Yachts UK – Lymington Yacht Haven – Kings Saltern Road – Lymington – Hampshire SO41 3QD – +44 (0)1590 676782
sales@maloyachts.co.uk - www.maloyachts.co.uk
Malö Yachts UK is a trading name of DFD Marine LTD Registered Company No. 7412841



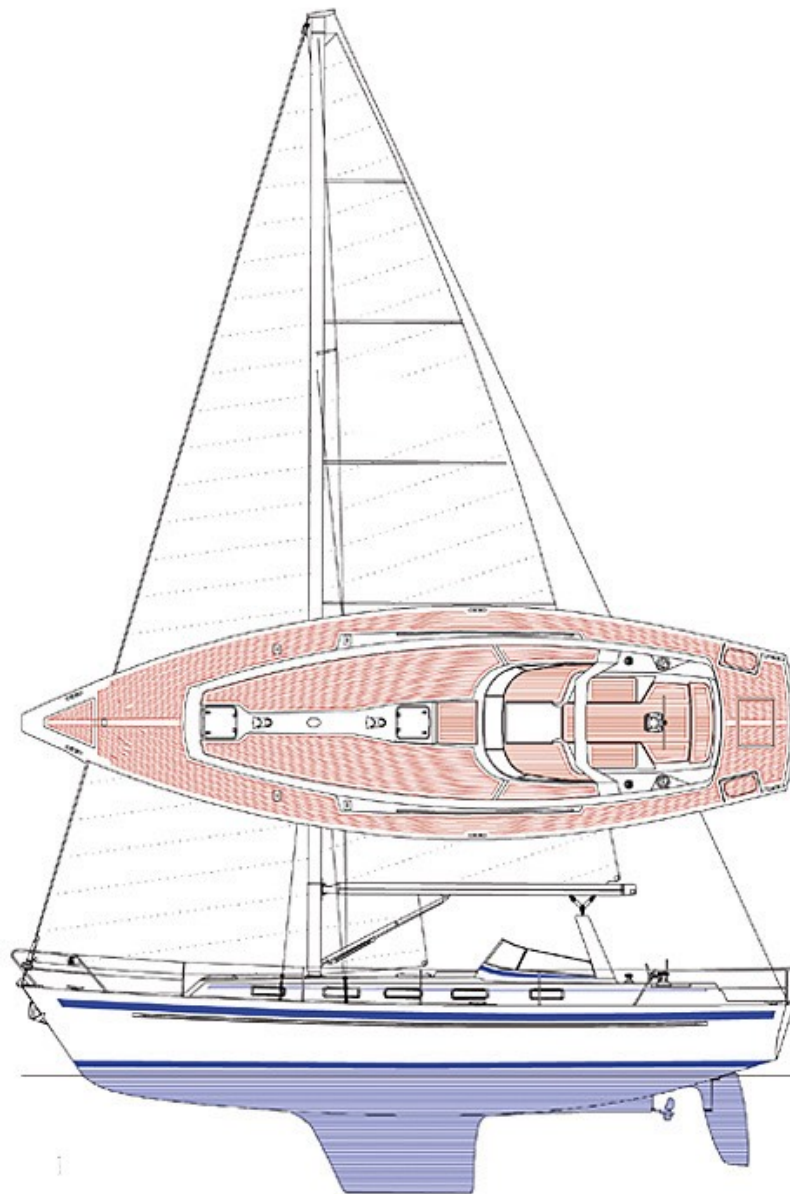
Malö Yachts

Malö Yachts UK – Lymington Yacht Haven – Kings Saltern Road – Lymington – Hampshire SO41 3QD – +44 (0)1590 676782
sales@maloyachts.co.uk – www.maloyachts.co.uk
Malö Yachts UK is a trading name of DFD Marine LTD Registered Company No. 7412841



Malö Yachts

Malö Yachts UK – Lymington Yacht Haven – Kings Saltern Road – Lymington – Hampshire SO41 3QD – +44 (0)1590 676782
sales@maloyachts.co.uk - www.maloyachts.co.uk
Malö Yachts UK is a trading name of DFD Marine LTD Registered Company No. 7412841



In this transaction we are acting as Brokers only. We are informed that this sale is not related to the Owner's business, trade or profession Whilst every care has been taken in their preparation, the correctness of these particulars is not guaranteed. The particulars are intended only as a guide and they do not constitute a term of any contract. A prospective buyer is strongly advised to check the particulars and where appropriate to have the vessel fully surveyed and inspected, sea trialled and opened up.

Malö Yachts

Malö Yachts UK – Lymington Yacht Haven – Kings Saltern Road – Lymington – Hampshire SO41 3QD – +44 (0)1590 676782
sales@maloyachts.co.uk - www.maloyachts.co.uk
Malö Yachts UK is a trading name of DFD Marine LTD Registered Company No. 7412841