



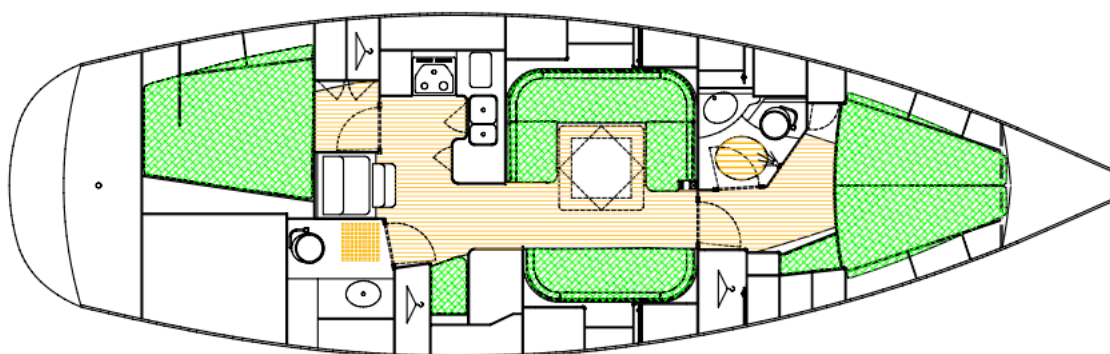
Malö Yachts 43 Classic

“STARFISH”

GBP 300,000.00 UK VAT paid



Almost certainly the ultimate cruising yacht, this Malo 43 is presented in superb condition. A very rare opportunity to acquire an incredibly capable offshore yacht in fantastic condition. Starfish has recently returned from spending the last 10 years in Sweden where she spent every winter and many full years in indoor storage and only lightly used in between. Teak decks are in excellent condition because of this and the interior is un-marked. The 'Classic' version gives a lovely aft deck and huge deck locker. The usual Malo features of exceptional build quality, safe and comfortable sailing, deep and spacious cockpit and vast amounts of stowage. She's a beautiful boat for local sailing but capable of much more if asked. Sails in very good condition and include a brand new cruising chute with snuffer. New cockpit chart plotter. Available with transferrable berth in Lymington Yacht Haven.



Built by Malö Yachts AB, Kungsviken, Sweden in 2008

LOA 13.40 m (plus bathing platform)
Beam 3.97 m
Draught 1.97 m
Displacement 11,300 kg
Lying Lymington, UK

Malö Yachts



Hull, Deck and Cockpit

Hand laid teak on deck, coach roof and cockpit
Insulated hull with lead keel
White gel coat with navy blue style stripe on hull and coachroof
Integral solid moulded rubbing strake
Bow Thruster - Side Power
Fixed windscreen with safety glass
Grab handles on windscreen
Targa arch with mainsheet and traveller over cockpit
Cockpit lights in targa arch
Large cockpit lockers, very large lazarette locker
Double gas locker and second draining deck locker
Opening guardrails port and starboard
Wheel steering and emergency tiller
Sprayhood and full height cockpit canopy in very good condition
Folding teak cockpit table
Hot and cold cockpit shower
Steering pedestal with compass and hand rail
Electric windlass, remote control, 30kg stainless steel anchor, 40m chain
Self tailing Electric Andersen primary winches
Self tailing manual Andersen secondary winches
Folding teak seat extensions
Teak aft deck/pushpit seats
Custom cockpit cushions
Stainless steel bow ladder
Stainless steel bathing platform with bathing ladder
Fenders and various mooring warps
Folding and removable davits
Teak bracket for outboard motor on pushpit
Custom bow roller at stem head with 2 rollers



Electronics

Switch panel at chart table with circuit breakers for protection
Water, fuel and volt gauges and battery monitor panel
240V shore power system including automatic 50 Amp battery charger, outlets and water heater
Domestic battery bank 4 x 115Ah (2019) and separate engine starter battery
Raymarine Radar scanner on mast, displayed on
Raymarine E80 screen at chart table (original)
Raymarine Axiom 12 Plotter/multifunction display in cockpit (**NEW Dec 2023**)
Raymarine ST60+ Speed, wind, depth at companionway
Raymarine ST60+ Multi at chart table
Raymarine ST6002 Autopilot
Raymarine Ray 240 VHF in cockpit
Raymarine Ray 240 VHF at chart table
Raymarine AIS 500 transceiver
ICS Nav6 Navtex
Efoy Comfort 140 Fuel cell (2014) Needs Service
USB A and C socket at chart table
12v socket in cockpit
Pioneer Stereo with speakers in saloon and cockpit



Safety Equipment

Liferaft in valise, 6 person (**NEW Sept 2023**)
Electric and manual bilge pumps
Fire extinguishers
Life buoy and light
Radar reflector on mast
Masthead tri-colour and anchor lights

Malö Yachts



Rigging and Sails

Deck stepped Selden mast with double spreaders
Selden rigging screw covers
Stainless steel standing rigging (Original)
Selden In-Mast furling system
Harken Genoa furling system
Selden rigid vang - no gas strut
Removable inner forestay with tensioner and deck fitting
Staysail halyard
Storm Jib for inner stay
Spinnaker pole stowed on mast
Furling mainsail, UK Syversen, 2008
Furling genoa, 110% UK Syversen, 2008
Cruising chute with ATN snuffer, Sanders
Deck light
Raymarine fog horn on mast

Engine and Tankage

Yanmar 75hp, 4-cylinder diesel engine
3 blade fixed propeller
Rope cutter to shaft
Stainless steel holding tank
Stainless steel fuel tank 370 litres
Stainless steel water tanks x 3 total 550 litres
Flexible shaft coupling, Aqua Drive

Interior

Beautiful hand crafted mahogany interior in excellent condition
High quality grey upholstery in excellent condition
Pressurised hot and cold water system
Hot water calorifier with electric immersion heater
Diesel fired Eberspacher cabin heater, water system, also heats domestic water
Heater outlets in all cabins and heads
Easy access to engine
Wide and shallow companionway steps
Opening portlights throughout - Lewmar Atlantic
High quality upholstery and fitted carpets throughout
Curtains to all portlights
Most lights converted to LED lighting
Fitted carpets throughout

Galley

Large galley with small return in worktop for safe cooking at sea
Corian worktop, sink covers and cooker cover
Mixer tap for hot and cold water
Footpump - fresh water, separate tap
Double stainless steel sink
Spacious refrigerator, Isotherm SP water cooled
Spacious freezer, Isotherm SP water cooled
Two burner ENO cooker with oven and grill
Ample storage in cupboards, lockers and drawers
Pull out teak chopping board

Saloon

U-shaped settee to port
Sofa to starboard
Both sofas have lee cloths for sea berths
Hinged backrests to sofas with storage behind
Large dining table with extension leaf
Large chart table with seat
Bookshelf on main bulkhead
Wardrobe and shoe locker behind chart table
Numerous storage cupboards and lockers
Large opening deck hatch with Oceanair blind/flyscreen



Malö Yachts



Forward cabin

Large double berth with sprung mattress and mattress topper
Large storage below berth, including 2 large drawers and **custom chart storage**
Numerous cupboards and wardrobes
Large mirror on bulkhead
Large opening deck hatch with Oceanair blind/flyscreen

Large En-suite shower room

Shower with mixer tap and drain pump
Laminate finish to inside of door
Corian worktop with built in basin
Lockers with mirror doors
Corian shower tray and toilet cover
Raritan manual sea toilet with holding tank

Aft heads

Raritan manual sea toilet with holding tank
Corian worktop with built in basin
Mixer tap
Shower drain pump
Laminate finish to inside of door
Lockers with mirror doors
Corian shower tray and toilet cover
Locker below basin
Hanging locker
Door to large cockpit locker

Aft Cabin

Large double berth, storage under with access to engine room and engine start battery
Mattress topper
Good storage in numerous lockers and wardrobe
Portlight to cockpit and to deck
Overhead escape hatch into cockpit



History

Supplied June 2008, Kungsviken, Sweden
September 2008 - Sailed to Lymington, UK
2008 - 2013 Local sailing and maintenance by Malo Yachts UK plus one trip to N Spain and back
2013 - Sailed to west coast Scotland, then through Caledonian canal and on to Norway and Sweden
Winter 2013/14 - Indoor winter storage and maintenance, August to May
2014 - sailed to east coast Sweden and back to west coast
Winter 2014/15 - Indoor winter storage and maintenance, August to May
2015 - sailed west coast Sweden
Winter 2015/16 - Indoor winter storage and maintenance, August to May
2106 - sailed west coast Sweden
Winter 2016 - Spring 2019 - Remained ashore in indoor storage
2019 - sailed west coast Sweden
Winter 2019 to September 2023 - Indoor winter storage and maintenance, August to May
October 2023 - sailed Sweden to UK
2023/24 day sailed occasionally from Lymington

Indoor winter storage and maintenance includes - Mast removed, stored in rack, sails in dry storage, rigging in dry storage, all removable upholstery in dry storage, batteries removed and regularly charge, full draining of systems and frost protection, full engine service, hull polish, antifoul paint, teak deck treatment, anode replacement.

Malö Yachts



Malö Yachts

Malö Yachts UK – Lymington Yacht Haven – Kings Saltern Road – Lymington – Hampshire SO41 3QD – +44 (0)1590 676782
sales@maloyachts.co.uk - www.maloyachts.co.uk
Malö Yachts UK is a trading name of DFD Marine LTD Registered Company No. 7412841



Malö Yachts

Malö Yachts UK – Lymington Yacht Haven – Kings Saltern Road – Lymington – Hampshire SO41 3QD – +44 (0)1590 676782
sales@maloyachts.co.uk - www.maloyachts.co.uk
Malö Yachts UK is a trading name of DFD Marine LTD Registered Company No. 7412841



Malö Yachts

Malö Yachts UK – Lymington Yacht Haven – Kings Saltern Road – Lymington – Hampshire SO41 3QD – +44 (0)1590 676782
sales@maloyachts.co.uk - www.maloyachts.co.uk
Malö Yachts UK is a trading name of DFD Marine LTD Registered Company No. 7412841



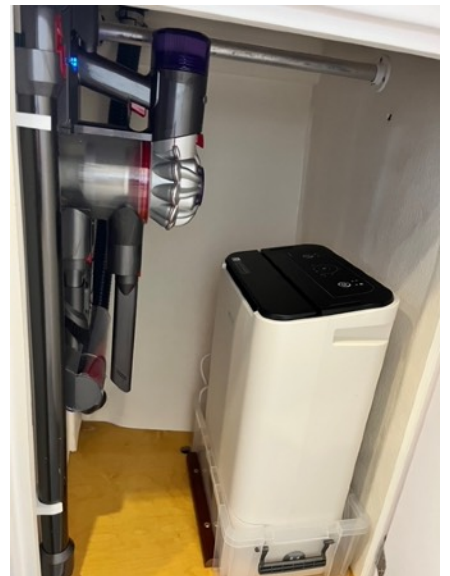
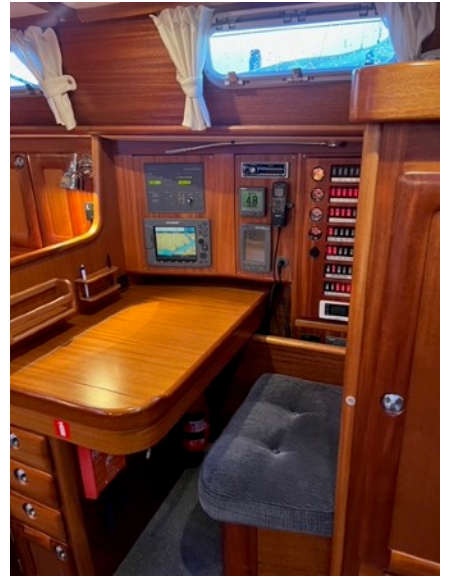
Malö Yachts

Malö Yachts UK – Lymington Yacht Haven – Kings Saltern Road – Lymington – Hampshire SO41 3QD – +44 (0)1590 676782
sales@maloyachts.co.uk - www.maloyachts.co.uk
Malö Yachts UK is a trading name of DFD Marine LTD Registered Company No. 7412841



Malö Yachts

Malö Yachts UK – Lymington Yacht Haven – Kings Saltern Road – Lymington – Hampshire SO41 3QD – +44 (0)1590 676782
sales@maloyachts.co.uk - www.maloyachts.co.uk
Malö Yachts UK is a trading name of DFD Marine LTD Registered Company No. 7412841



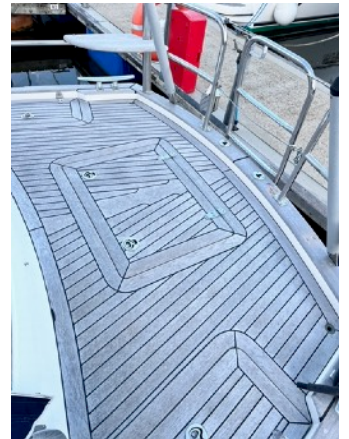
Malö Yachts

Malö Yachts UK – Lymington Yacht Haven – Kings Saltern Road – Lymington – Hampshire SO41 3QD – +44 (0)1590 676782
sales@maloyachts.co.uk - www.maloyachts.co.uk
Malö Yachts UK is a trading name of DFD Marine LTD Registered Company No. 7412841



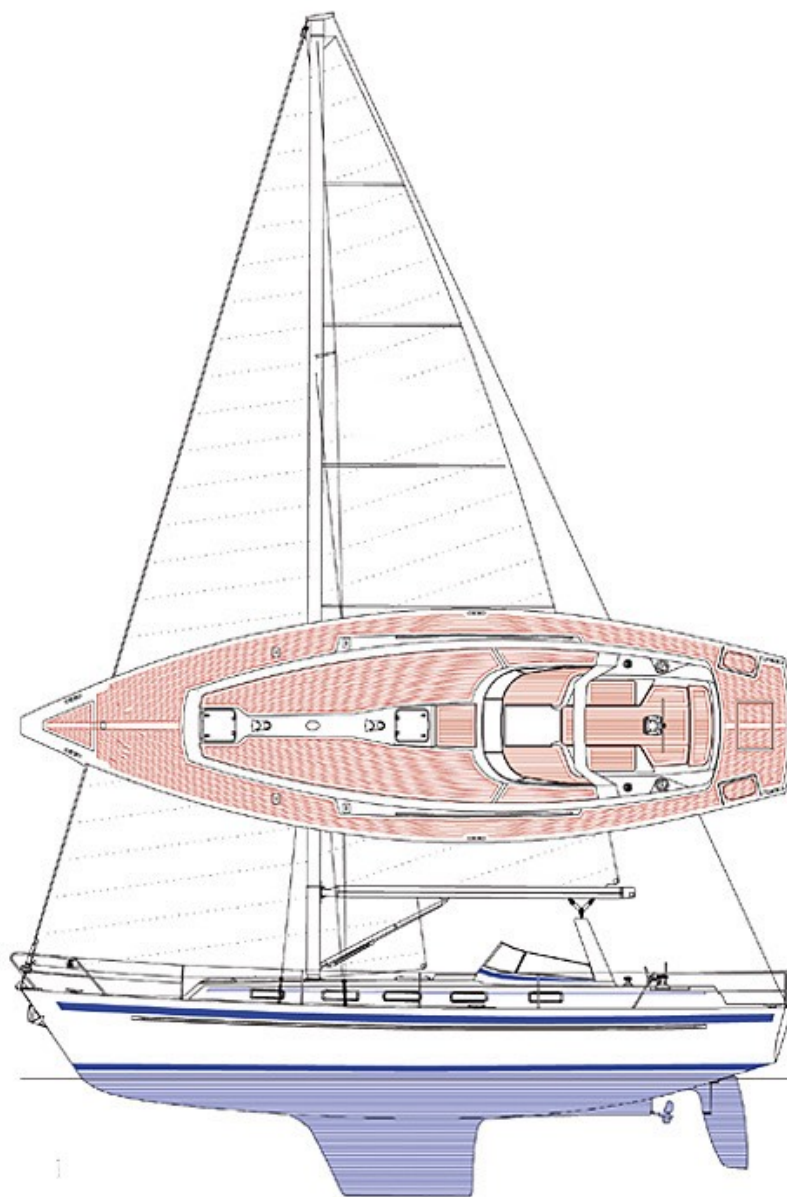
Malö Yachts

Malö Yachts UK – Lymington Yacht Haven – Kings Saltern Road – Lymington – Hampshire SO41 3QD – +44 (0)1590 676782
sales@maloyachts.co.uk - www.maloyachts.co.uk
Malö Yachts UK is a trading name of DFD Marine LTD Registered Company No. 7412841



Malö Yachts

Malö Yachts UK – Lymington Yacht Haven – Kings Saltern Road – Lymington – Hampshire SO41 3QD – +44 (0)1590 676782
sales@maloyachts.co.uk - www.maloyachts.co.uk
Malö Yachts UK is a trading name of DFD Marine LTD Registered Company No. 7412841



In this transaction we are acting as Brokers only. We are informed that this sale is not related to the Owner's business, trade or profession Whilst every care has been taken in their preparation, the correctness of these particulars is not guaranteed. The particulars are intended only as a guide and they do not constitute a term of any contract. A prospective buyer is strongly advised to check the particulars and where appropriate to have the vessel fully surveyed and inspected, sea trialled and opened up.

Malö Yachts

Malö Yachts UK – Lymington Yacht Haven – Kings Saltern Road – Lymington – Hampshire SO41 3QD – +44 (0)1590 676782
sales@maloyachts.co.uk - www.maloyachts.co.uk
Malö Yachts UK is a trading name of DFD Marine LTD Registered Company No. 7412841